


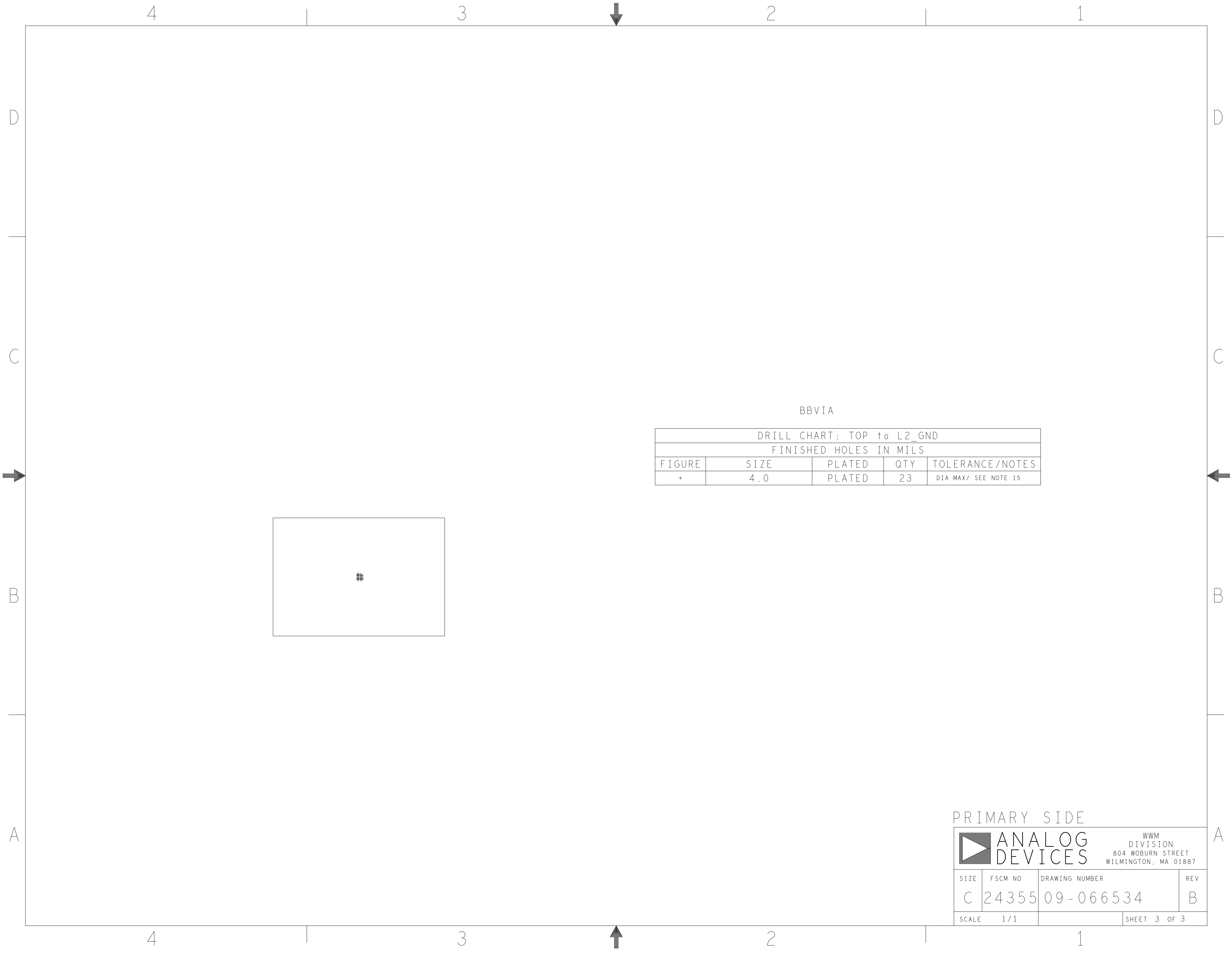
| REVISIONS | | | |
|-----------|---------------------------|---------|-------------|
| REV | DESCRIPTION | DATE | APPROVED |
| A | INITIAL RELEASE | 24MAY21 | A. CATAPANG |
| B | CHANGES AS PER ECR-113045 | 20FEB23 | M. SO |

HOLE TOLERANCE
UNLESS SPECIFIED
PLATED: +/-3MILS
NON PLATED: +/-2MILS

| DRILL CHART: TOP to BOTTOM | | | | |
|----------------------------|-------|------------|-----|-----------------|
| FINISHED HOLES IN MILS | | | | |
| FIGURE | SIZE | PLATED | QTY | TOLERANCE/NOTES |
| □ | 10.0 | PLATED | 354 | DIA MAX |
| ○ | 28.0 | PLATED | 16 | |
| ◇ | 35.0 | PLATED | 4 | |
| △ | 45.0 | PLATED | 62 | |
| A | 125.0 | NON-PLATED | 4 | |

PRIMARY SIDE

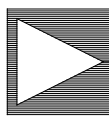
| | | | | | | | | | | | | | | | | |
|--|-----------|--------|--------------------------------|--|---------|--|---|--|------------------|--|-----------------------------|--|----------|--|--------|--|
| UNLESS OTHERWISE SPECIFIED DIMENSIONS ARE IN INCHES | | | APPROVAL | | DATE | | <div><div></div><div>ANALOG DEVICES</div></div> <div>WWM DIVISION 804 WOBURN STREET WILMINGTON, MA 01887</div> | | | | | | | | | |
| TOLERANCES | | | TEMPLATE ENGINEER N/A | | N/A | | | | | | | | | | | |
| DECIMALS | FRACTIONS | ANGLES | HARDWARE SERVICES M. VALE | | 24MAY21 | | TITLE FABRICATION AD5940 CUSTOMER EVALUATION BOARD Z | | | | | | | | | |
| .XX -.010 | --1/32 | -- 2 | HARDWARE SYSTEMS N/A | | N/A | | | | | | | | | | | |
| .XXX -.005 | | | TEST ENGINEER N/A | | N/A | | | | | | | | | | | |
| .XXXX -.0050 | | | COMPONENT ENGINEER M. YAN | | 24MAY21 | | | | | | | | | | | |
| MATERIAL | | | TEST PROCESS N/A | | N/A | | | | | | | | | | | |
| | | | HARDWARE RELEASE K. JABATAN | | 24MAY21 | | | | | | | | | | | |
| | | | DESIGNER K. MOYO | | 24MAY21 | | | | | | | | | | | |
| FINISH | | | PTD ENGINEER A. CATAPANG | | 24MAY21 | | SIZE C | | FSCM NO 24355 | | DRAWING NUMBER 09-066534 | | REV B | | | |
| | | | CHECKER N/A | | N/A | | | | | | | | | | | |
| DO NOT SCALE DWG | | | | | | | SCALE | | 1 / 1 | | | | SHEET | | 1 OF 3 | |



BBVIA

| DRILL CHART: TOP to L2_GND | | | | |
|----------------------------|------|--------|-----|----------------------|
| FINISHED HOLES IN MILS | | | | |
| FIGURE | SIZE | PLATED | QTY | TOLERANCE/NOTES |
| + | 4.0 | PLATED | 23 | DIA MAX/ SEE NOTE 15 |

PRIMARY SIDE



ANALOG
DEVICES

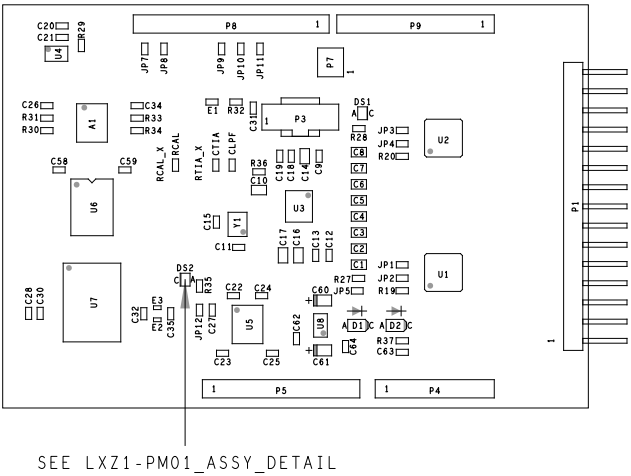
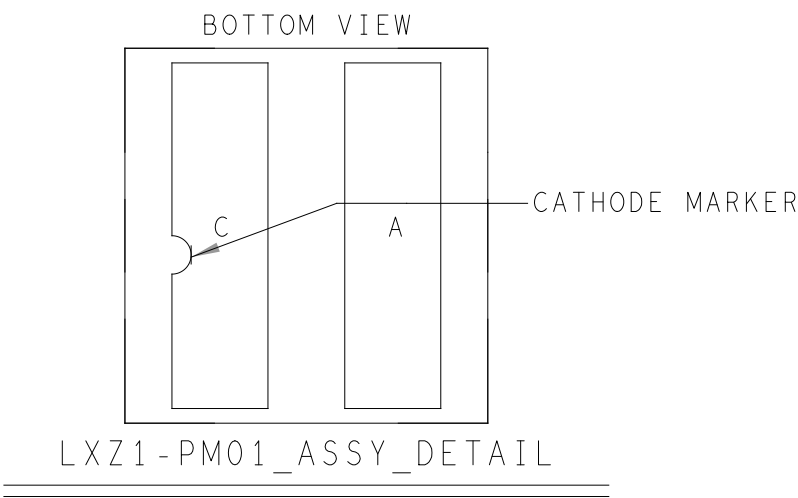
WWM
DIVISION
804 WOBURN STREET
WILMINGTON, MA 01887

| | | | |
|-------|---------|----------------|-----|
| SIZE | FSCM NO | DRAWING NUMBER | REV |
| C | 24355 | 09-066534 | B |
| SCALE | 1 / 1 | SHEET 3 OF 3 | |


| REVISIONS | | | |
|-----------|---------------------------|---------|-------------|
| REV | DESCRIPTION | DATE | APPROVED |
| A | INITIAL RELEASE | 24MAY21 | A. CATAPANG |
| B | CHANGES AS PER ECR-113045 | 20FEB23 | M. SO |

ASSEMBLY NOTES:

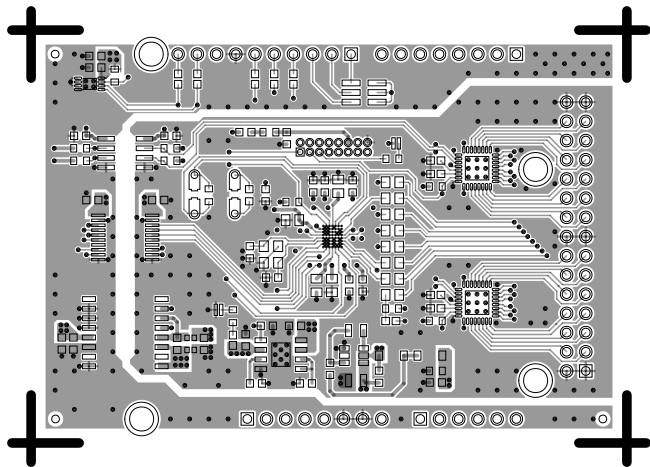
1.
- BOARD ACCEPTABILITY PER ANALOG DEVICES, INC. SPECIFICATION TST00119 (LATEST REVISION).
2.
- REPAIRS PER IPC-7711/21(LATEST REVISION) ARE ALLOWED.
3.
- REPAIRS ARE NOT ALLOWED IN SOLDERMASK FREE AREAS ON EITHER SIDE OF THE BOARD.
4.
- RoHS COMPLIANCE: ASSEMBLY VENDOR SHOULD ASSURE COMPLIANCE WITH LEAD-FREE AND RoHS PCB ASSEMBLY STANDARDS (EU RoHS DIRECTIVE 2002/95/EC).
5.
- SINGULATE BOARDS AFTER ASSEMBLY PROCESS.
SMOOTHEN EDGES AND FREE FROM BURRS AFTER DEPANELIZATION PROCESS.



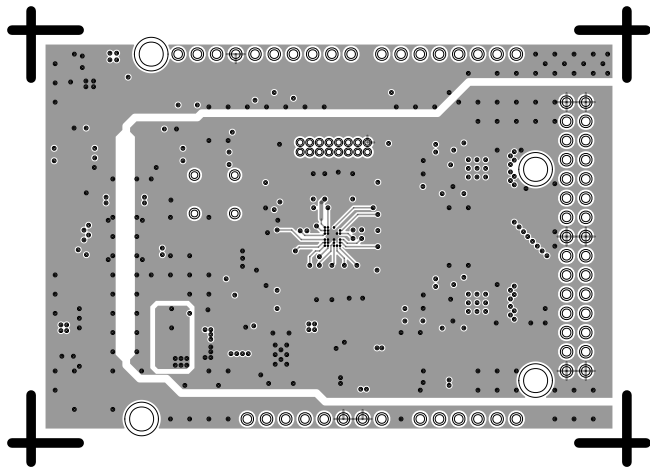
PRIMARY SIDE

| | | | | | | | | | | | | | | | | | | |
|--|-----------|--------|--------------------|--|---------|--|---|--|-------|--|-------------|--|---------|--|----------------|--|-----|--|
| UNLESS OTHERWISE SPECIFIED DIMENSIONS ARE IN INCHES | | | APPROVAL | | DATE | | <div><div></div><div>ANALOG DEVICES</div></div> <div>WWM DIVISION 804 WOBURN STREET WILMINGTON, MA 01887</div> | | | | | | | | | | | |
| TOLERANCES | | | TEMPLATE ENGINEER | | N/A | | | | | | | | | | | | | |
| DECIMALS | FRACTIONS | ANGLES | HARDWARE SERVICES | | 24MAY21 | | | | | | | | | | | | | |
| .XX --.010 | --1/32 | -- 2 | M. VALE | | | | | | | | | | | | | | | |
| .XXX --.005 | | | HARDWARE SYSTEMS | | N/A | | TITLE ASSEMBLY AD5940 CUSTOMER EVALUATION BOARD Z | | | | | | | | | | | |
| .XXX --.0050 | | | N/A | | | | | | | | | | | | | | | |
| MATERIAL | | | TEST ENGINEER | | N/A | | | | | | | | | | | | | |
| | | | N/A | | N/A | | | | | | | | | | | | | |
| | | | COMPONENT ENGINEER | | 24MAY21 | | | | | | | | | | | | | |
| | | | M. YAN | | | | | | | | | | | | | | | |
| FINISH | | | TEST PROCESS | | N/A | | | | | | SIZE | | FSCM NO | | DRAWING NUMBER | | REV | |
| | | | N/A | | N/A | | | | | | | | | | | | | |
| | | | HARDWARE RELEASE | | 24MAY21 | | | | | | | | | | | | | |
| | | | K. JABATAN | | | | | | | | | | | | | | | |
| | | | DESIGNER | | 24MAY21 | | C | | 24355 | | 01 - 066534 | | B | | | | | |
| | | | K. MOYO | | | | | | | | | | | | | | | |
| | | | PTD ENGINEER | | 24MAY21 | | | | | | | | | | | | | |
| | | | A. CATAPANG | | | | SCALE | | 1 / 1 | | SHEET | | 1 OF 1 | | | | | |
| | | | CHECKER | | N/A | | | | | | | | | | | | | |
| | | | N/A | | | | | | | | | | | | | | | |
| | | | | | | | | | | | | | | | | | | |
| DO NOT SCALE DWG | | | | | | | | | | | | | | | | | | |

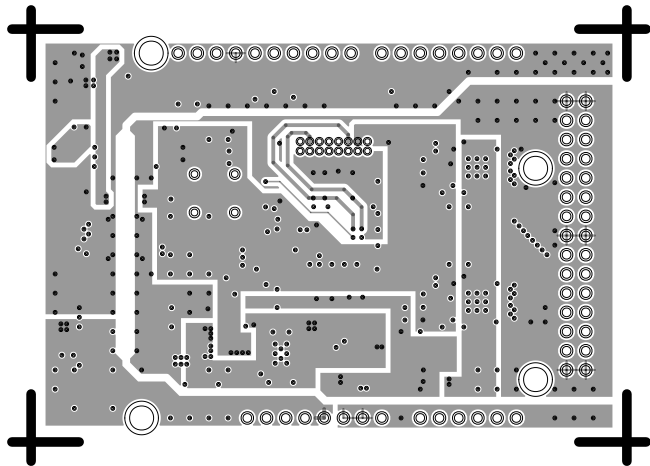
L1 PRIMARY
08-066534-01
REV B



L2 GND
08-066534-07
REV B



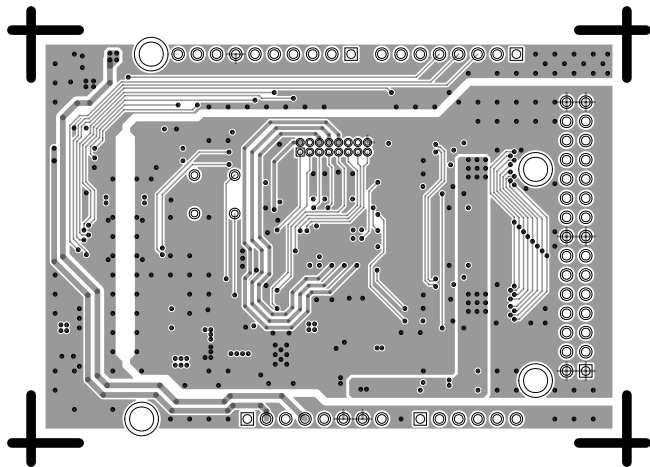
L3 PWR
08-066534-08
REV B



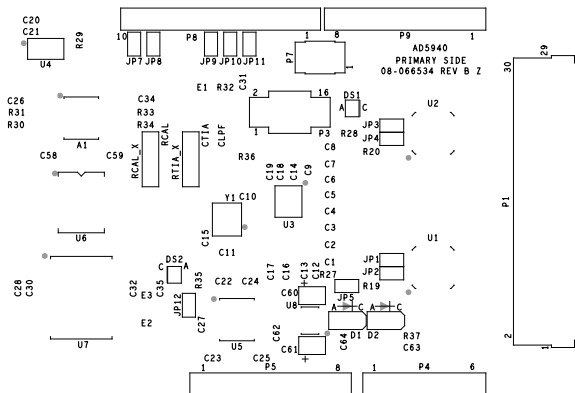
L4 SECONDARY

08-066534-02

REV B



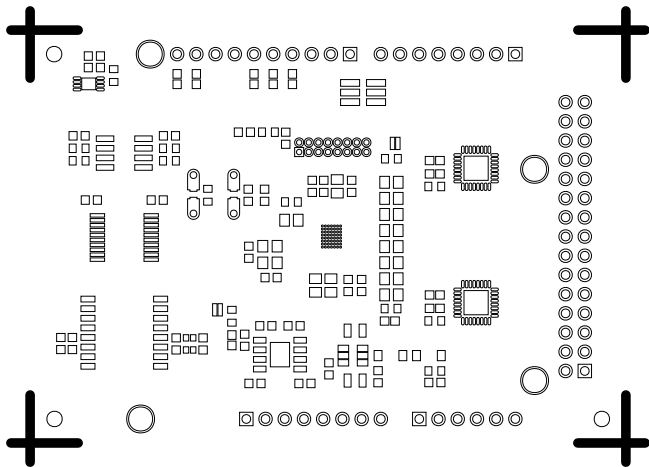
REV B



SOLDERMASK PRIMARY

08-066534-04

REV B



SILKSCREEN SECONDARY

08-066534-05

REV B



ANALOG
DEVICES
AHEAD OF WHAT'S POSSIBLE™

08-066534 REV B
SECONDARY SIDE



SOLDERMASK SECONDARY

08-066534-06

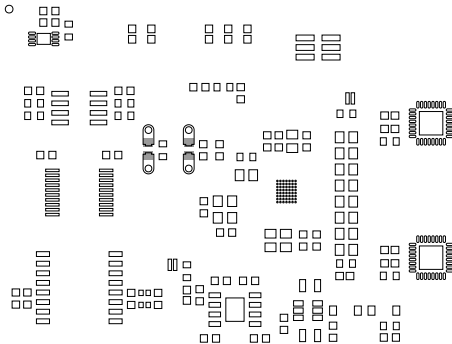
REV B



PASTEMASK PRIMARY

08-066534-09

REV B

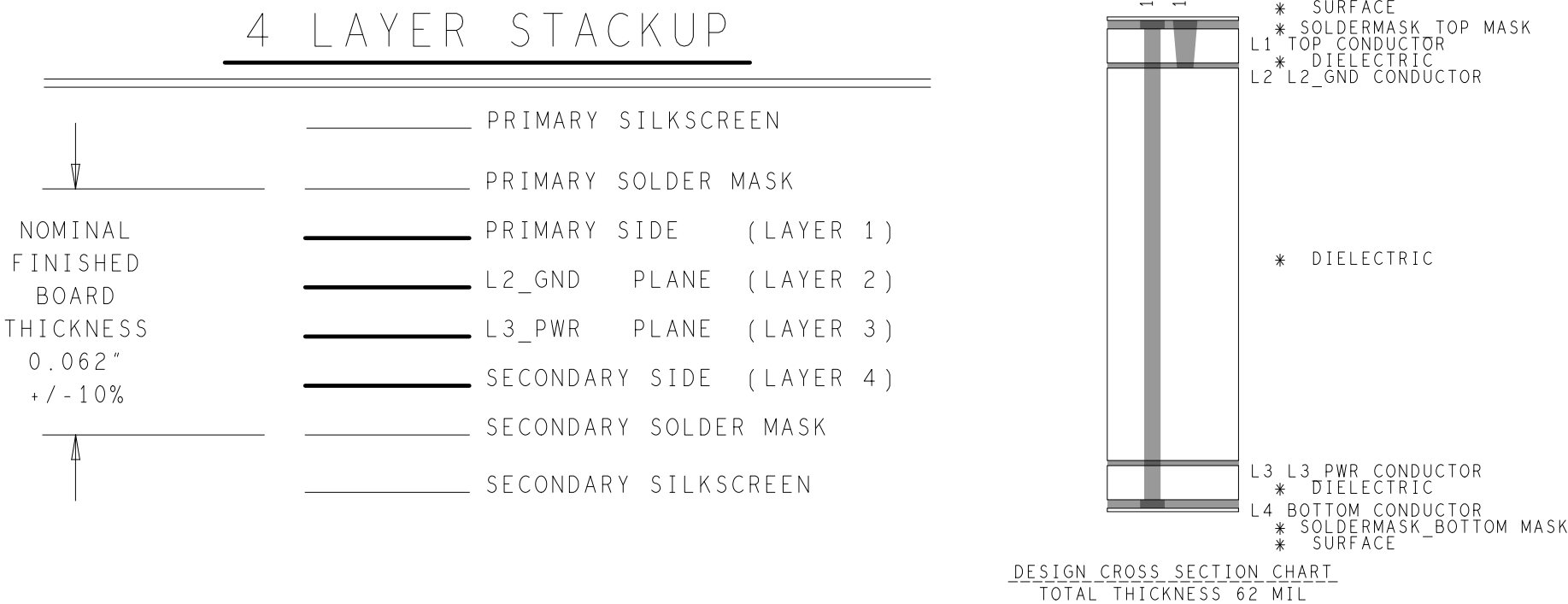


SPECIFICATIONS:

- ROHS COMPLIANCE NOTE: HOMOGENOUS MATERIALS IN THIS BOARD SHALL BE COMPLIANT THE EU RoHS DIRECTIVE 2002/95/EC
- MATERIALS: ALL LAMINATES AND BONDING MATERIALS SHOULD BE SELECTED FROM IPC-4101 OR IPC-4103, MINIMUM Tg>170degC, Td>300degC, U.L. RATING OF 94 V-0
- MATERIAL FAMILY: ISOLA 370HR OR EQUIVALENT
- CLADDING: EXTERNAL LAYERS .5 OZ. COPPER, OVERPLATE TO 1.5 OZ.
~~INTERNAL SIGNAL LAYERS .5 OZ. COPPER.~~
INTERNAL PLANE LAYERS 1 OZ. COPPER.
- NOTE: IF THE LAYER STACKUP CONFLICTS WITH THE ABOVE CLADDING SPECIFICATIONS THEN THE LAYER STACKUP SHALL TAKE PRECEDENCE.
- SOLDER MASK: SHALL BE LIQUID PHOTOIMAGEABLE (LPI) APPLIED ON BOTH SIDES OVER BARE COPPER OR GOLD AND SHALL MEET IPC-SM-840 (LATEST REV.) CLASS 3. COLOR GREEN.
- SILK SCREEN: SHALL BE PERMANENT NON-CONDUCTIVE EPOXY INK, COLOR: WHITE
SYNTHETIC INKJET PRINTING ALLOWED FOR DENSE BOARDS, COLOR: WHITE
- SURFACE FINISH: ENIG (ELECTROLESS NICKEL/IMMERSION GOLD)
PER IPC-4552 LATEST REVISION
- INTENTIONAL SHORTS: IF SUPPLIED DATA INCLUDES A FILE "READ_ME.2", THEN INTENTIONAL NET SHORTS EXIST. CUSTOMER REVIEW AND APPROVAL IS REQUIRED IF SUPPLIED DATA REPORTS ANY CONDITION THAT DOES NOT MATCH "READ_ME.2" FILE PROVIDED.
- TEST REQUIREMENTS: 100% NETLIST ELECTRICAL VERIFICATION USING CUSTOMER SUPPLIED IPC-D-356 NETLIST FOR OPENS AND SHORTS WHEN "GERBER DATA" IS PROVIDED. THIS VERIFICATION ALSO REQUIRED FOR "ODB++" DATA PER EMBEDDED NETLIST.

REQUIREMENTS:

- REFER TO IPC-6010 SERIES (LATEST REV.), CLASS 2 FOR FABRICATION UNLESS OTHERWISE SPECIFIED.
- ACCEPTABILITY PER ANALOG DEVICES, INC. SPECIFICATION TST00115, (LATEST REVISION.)
- MODIFICATIONS TO THE ARTWORK ARE NOT ALLOWED WITHOUT WRITTEN AUTHORIZATION.
- HOLE PATTERN TOLERANCES FOR UNDIMENSIONED HOLES SHALL BE A DIAMETER OF 0.005 INCHES FROM THEIR TRUE POSITION.
- PLATED HOLE WALL THICKNESS SHALL NOT BE LESS THAN 0.001 INCH MINIMUM AVERAGE, WITH NO READING LESS THAN .0008 INCH BY CROSS SECTION.
- HOLE DIAMETERS APPLY AFTER PLATING.
- FINISHED CONDUCTOR WIDTHS SHALL NOT BE REDUCED FROM THE NOMINAL INDICATED ON THE MASTER PATTERN, BY MORE THAN THE CONDUCTOR THICKNESS.
- MINIMUM DESIGN LINE WIDTH IS .008 INCH.
- MINIMUM DESIGN SPACING IS .003 INCH.
- ~~NON FUNCTIONAL PAD REMOVAL FROM INNER SIGNAL LAYERS MAY BE PERFORMED AFTER CUSTOMER APPROVAL.~~
- IF PAD SIZES PROVIDED ARE NOT LARGE ENOUGH TO MAINTAIN ANNULAR RING REQUIREMENT, MFGR. MAY REQUEST APPROVAL TO TEAR DROP PADS TO MAINTAIN ANNULAR RING. (AT PAD TO TRACE INTERSECTION ONLY AND ELECTRICAL INTEGRITY MUST BE MAINTAINED.)
- THIEVING MAY BE ADDED TO COMPENSATE FOR LOW COPPER DENSITY AREAS ON THIS DESIGN ONLY AFTER REVIEW AND APPROVAL FROM THE CUSTOMER:
 - THIEVING TO CARD EDGE, FIDUCIALS, NON-PLATED THROUGH HOLES, ALL OTHER FEATURES TO BE 0.200 INCH MINIMUM.
 - THERE SHALL BE NO THIEVING IN ANY AREAS FREE OF SOLDER MASK OR INTERNAL COPPER PLANES.
- MFGR. TO LEGIBLY ETCH OR STAMP/SCREEN WITH PERMANENT NON-CONDUCTIVE INK ON SECONDARY SIDE IN A CLEAR AREA UNLESS OTHERWISE INDICATED:
 - U.L. CODE-FLAMMABILITY RATING
 - DATE CODE (STAMP).
 - LOT NUMBER
 - MFGR LOGO
 - SUCCESSFUL ELECTRICAL TEST.
- REPAIRS PER IPC-7711/21 (LATEST REV.) ARE ALLOWED.
- LASER VIAS TO BE COPPER FILLED/PLATED SHOT AND PLANARIZED.
- BOARDS TO BE SHIPPED IN ARRAY AND KEEP INTACT. PANEL TO BE SUBJECTED TO CUSTOMER'S APPROVAL. PANELED SOLDER PASTE STENCIL SHOULD BE SENT TO THE CUSTOMER.



PRIMARY SIDE

ANALOG DEVICES

WWM DIVISION
804 WOBURN STREET
WILMINGTON, MA 01887

| | | | |
|-------|---------|----------------|-----|
| SIZE | FSCM NO | DRAWING NUMBER | REV |
| C | 24355 | 09-066534 | B |
| SCALE | 1 / 1 | SHEET 2 OF 3 | |